



IQ Engine 10.6r1

Release Notes

May 2023



Copyright © 2023 Extreme Networks, Inc. All rights reserved.

Legal Notice

, Inc. reserves the right to make changes in specifications and other information contained in this document and its website without prior notice. The reader should in all cases consult representatives of to determine whether any such changes have been made.

The hardware, firmware, software or any specifications described or referred to in this document are subject to change without notice.

Trademarks

and the logo are trademarks or registered trademarks of , Inc. in the United States and/or other countries.

All other names (including any product names) mentioned in this document are the property of their respective owners and may be trademarks or registered trademarks of their respective companies/owners.

For additional information on trademarks, see:

Open Source Declarations

Some software files have been licensed under certain open source or third-party licenses.

End-user license agreements and open source declarations can be found at: <https://www.extremenetworks.com/support/policies/open-source-declaration/>

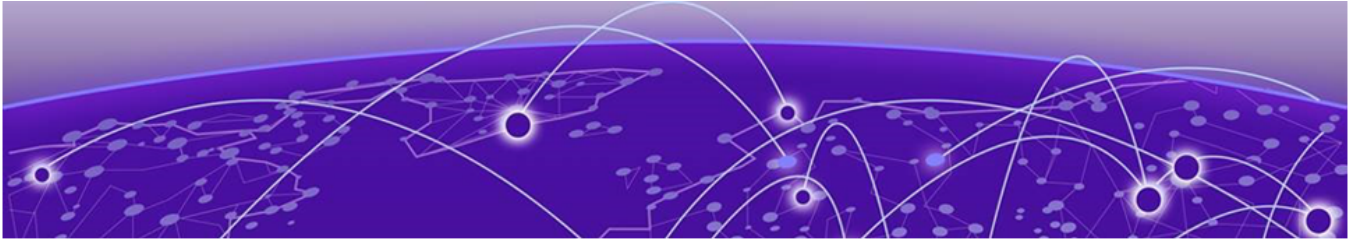


Table of Contents

General Release Information.....	4
Release Date.....	4
New hardware supported.....	4
Hardware platforms supported.....	4
Management platforms supported.....	5
New Features.....	6
Addressed Issues.....	7
Known Issues.....	8



General Release Information

Release Date

May 2023

New hardware supported

The following hardware is supported with this release

- AP3000
- AP3000X

Hardware platforms supported

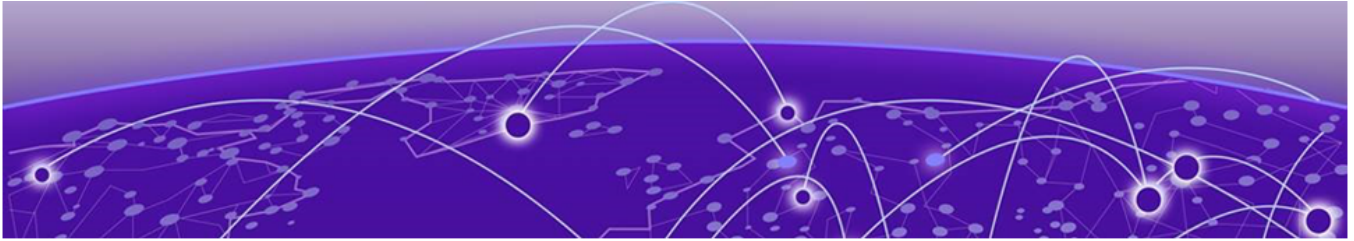
- AP130
- AP250
- AP630
- AP650
- AP650X
- AP122
- AP150W
- AP30
- AP305C/CX
- AP305C-1
- AP302W
- AP510C/CX
- AP410C
- AP410C-1
- AP460C
- 460S6C
- 460S12C
- AP3000
- AP3000X
- AP4000
- AP4000-1
- AP5010

- AP5050D
- AP5050U

Management platforms supported

ExtremeCloud IQ 23.3.0 and later

Virtual Appliance 21.1.23.4



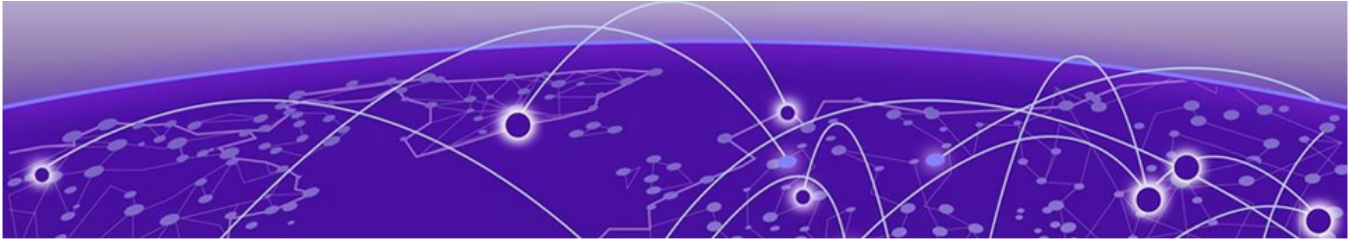
New Features

Feature ID	New Feature	Description
HOS-17250	AP5050U and AP5050D	AP5050 now supports Client Mode.
HOS-18811	AP5050U and AP5050D	AP5050 now supports Honduras
HOS-18988	AP5050U and AP5050D	AP5050 now supports Japan, No 6E



Addressed Issues

Issue ID	Description
CFD-8860 (02705921, 02739394)	Addressed an issue where APs were showing high CPU utilization when they were running 10.5.3 or above. Affected AP122/AP150W/AP302W/AP460C.
CFD-8854 (02718195)	Addressed an issue where AP4000/AP5010/AP305C/AP410C(wifi0)/AP460C(wifi0) Radio RX stuck after ACSP or boot up. This issue will NOT be recovered unless the AP is rebooted.
CFD-8669 (02652714)	Addressed an issue where on the AP130, WiFi1 stopped transmitting intermittently.
CFD-8188 (02623237, 02635389, 02710327)	Addressed an issue where the AP650X failed to update when Location Essentials was enabled.
HOS-18800	Addressed an issue where Function Test roam failed with the target AP sending a deauth reason of unspecified failure on receiving reassoc req from sta.
HOS-18796	Addressed an issue that involved HiveOS/IQ Engine Vulnerabilities through CAPWAP.



Known Issues

Issue ID	Description
HOS-17683	Some WPA3 clients cannot associate to the AP4000 properly when band steering is enabled. Workaround: Disable band steering.
CFD-7445 (02496570, 02626393, 02651353)	802.11ax client, such as iPhone 12/13, experiences difficulties when receiving 11ac frames if the MCS rate >5 on a Wave1 chip platform, such as AP230, AP122, and AP130. Workaround: Use 11AC with lower MCS rates (from 0-3), or use 11N.